



Nintendo 2DS Screen Replacement

This guide is focusing on the screen, but could be used as a general disassembly guide due to the nature of the device's construction.

Written By: Cassius





TOOLS:

- [Pro Tech Toolkit](#) (1)
-

Step 1 — Screen



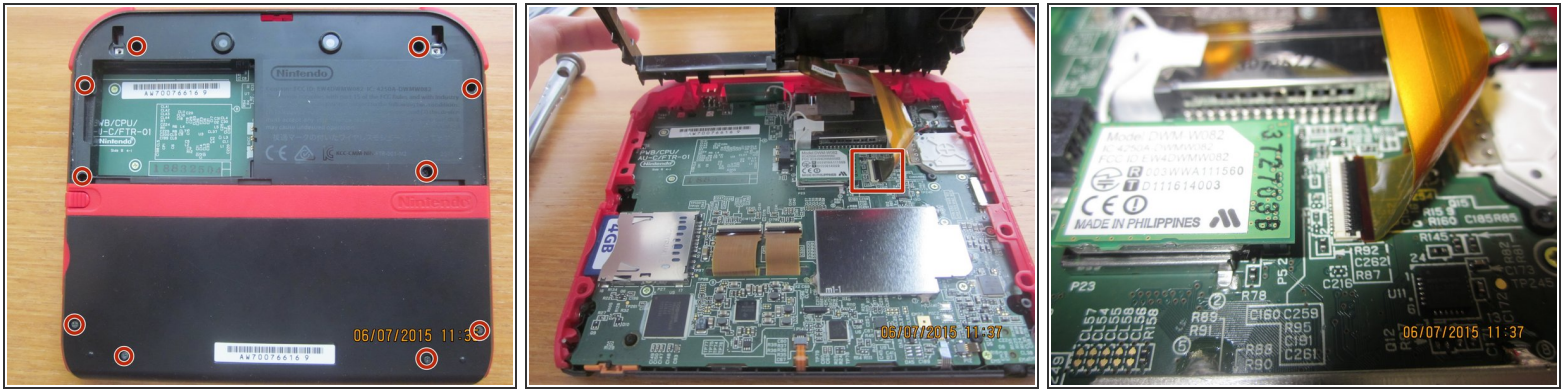
- Get your tools ready.
 - Device
 - Screwdrivers: I am using the 54 bit set.
 - Replacement screen.
 - Optional: Plastic opening tools.
 - Optional: Tweezers.

Step 2 — Remove Exterior Screws



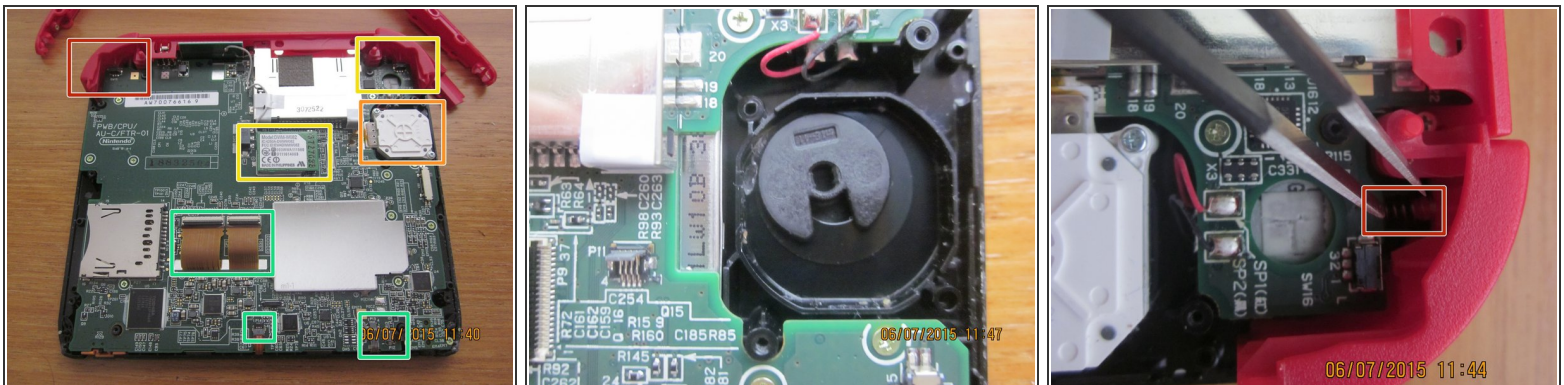
- Flip the device to show the back.
- Unscrew the two screws on the top half of the device.
- Lift off the panel using the small pull area at the very top. (Marked in yellow).

Step 3 — Remove Battery



- Remove battery.
- Unscrew the 10 screws holding in the back panel.
- Carefully lift up the panel from the bottom and unhook the ribbon.

Step 4 — Remove frame and unhook things



- Gently lift off the coloured frames on the sides.
- Remove L&R triggers
 - I recommend using tweezers to push back the spring so allow easy lift and placement.
- Remove circle pad module.
- Remove wifi module
- Unseat the ribbon cables.
 - 2 big ones mid board, 1 center bottom edge, 2 Bottom right corner.

This document was generated on 2019-09-30 08:20:41 AM (MST).

Step 5 — Disconnect camera ribbon.



- Unscrew 11 Motherboard screws.
- Lift off motherboard and top colored piece.
- Lift off screen carefully. It had adhesive so don't be surprised.

Step 6 — Remove coloured bumpers and shoulder buttons.



- Insert wisdom here.

Step 7 — Remove Joystick



- Insert wisdom here.

Step 8 — Dismount wifi card



- Insert wisdom here.

Step 9 — Unscrew Motherboard



- Insert wisdom here.

To reassemble your device, follow these instructions in reverse order.